



21 Mill Close, Fishbourne PO19 3JW

OIEO £300,000 Leasehold - Share of Freehold



3 Bedrooms



1 Bathroom



1 Reception Room

*Sw*

Sims Williams

## Key Features

- First Floor Apartment
- Highly Sought-After Location
- Views To Harbour
- Generous Sitting/Dining Room
- Contemporary Fitted Kitchen
- Utility Room With WC
- Three Bedrooms
- Stylish Shower Room
- Garage & Residents' Parking

## EPC Rating

Current = C

Potential = C

## Council Tax Band

Band = C

## Tenure - Leasehold - Share of Freehold

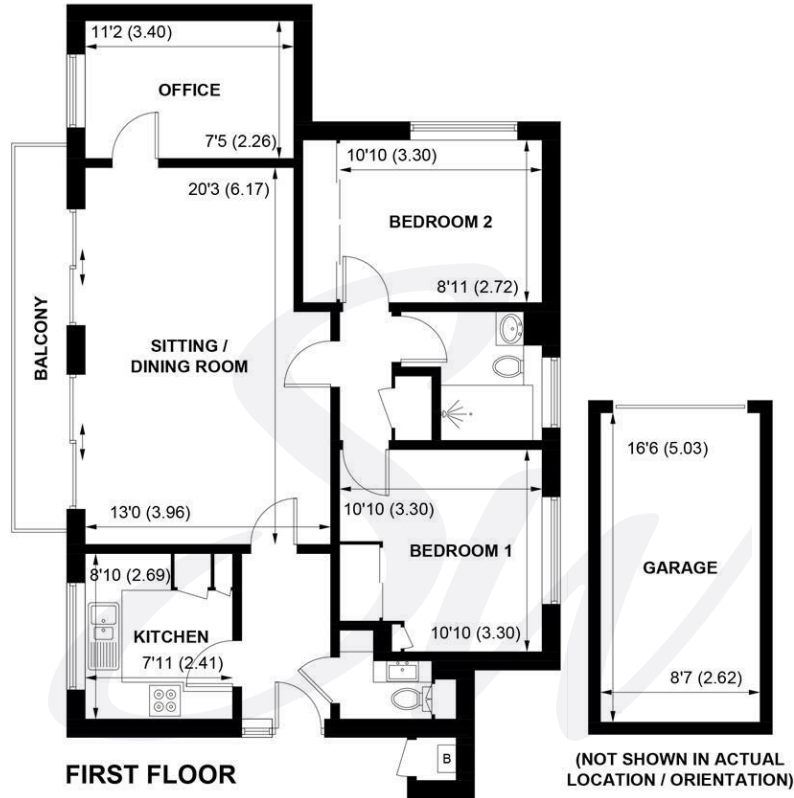
Length of Lease: 999yrs

Years Remaining: 975yrs

Ground Rent: incl in Service Charge

Service Charge: £2,200.00pa





APPROXIMATE GROSS INTERNAL AREA = 820 SQ FT / 76.2 SQ M

GARAGE / EXTERNAL CUPBOARD = 146 SQ FT / 13.6 SQ M

TOTAL = 966 SQ FT / 89.8 SQ M

NOT TO SCALE (For illustrative purposes only as defined by RICS Code of Measuring Practice) 2026 ©

Produced for Sims Williams



[simswilliams.co.uk](http://simswilliams.co.uk)

#### CHICHESTER

---

8-9 Southgate

Sales 01243 787868

Lettings 01243 836055

[chichester@simswilliams.co.uk](mailto:chichester@simswilliams.co.uk)

#### WALBERTON

---

5 Maple Parade

Sales 01243 551368

Lettings 01243 836055

[walberton@simswilliams.co.uk](mailto:walberton@simswilliams.co.uk)

#### ARUNDEL

---

8a High Street

Sales 01903 885678

Lettings 01903 881133

[arundel@simswilliams.co.uk](mailto:arundel@simswilliams.co.uk)

#### BOGNOR REGIS

---

46 High Street

Sales 01243 862626

Lettings 01243 836055

[bognor-regis@simswilliams.co.uk](mailto:bognor-regis@simswilliams.co.uk)

Viewing Strictly by arrangement via the vendor's agent Sims Williams 01243 787868. These particulars are believed to be correct but their accuracy is not guaranteed and they do not form part of any contract.